

The Standard

Events Kit



8300 SUNSET BOULEVARD WEST HOLLYWOOD, CALIFORNIA

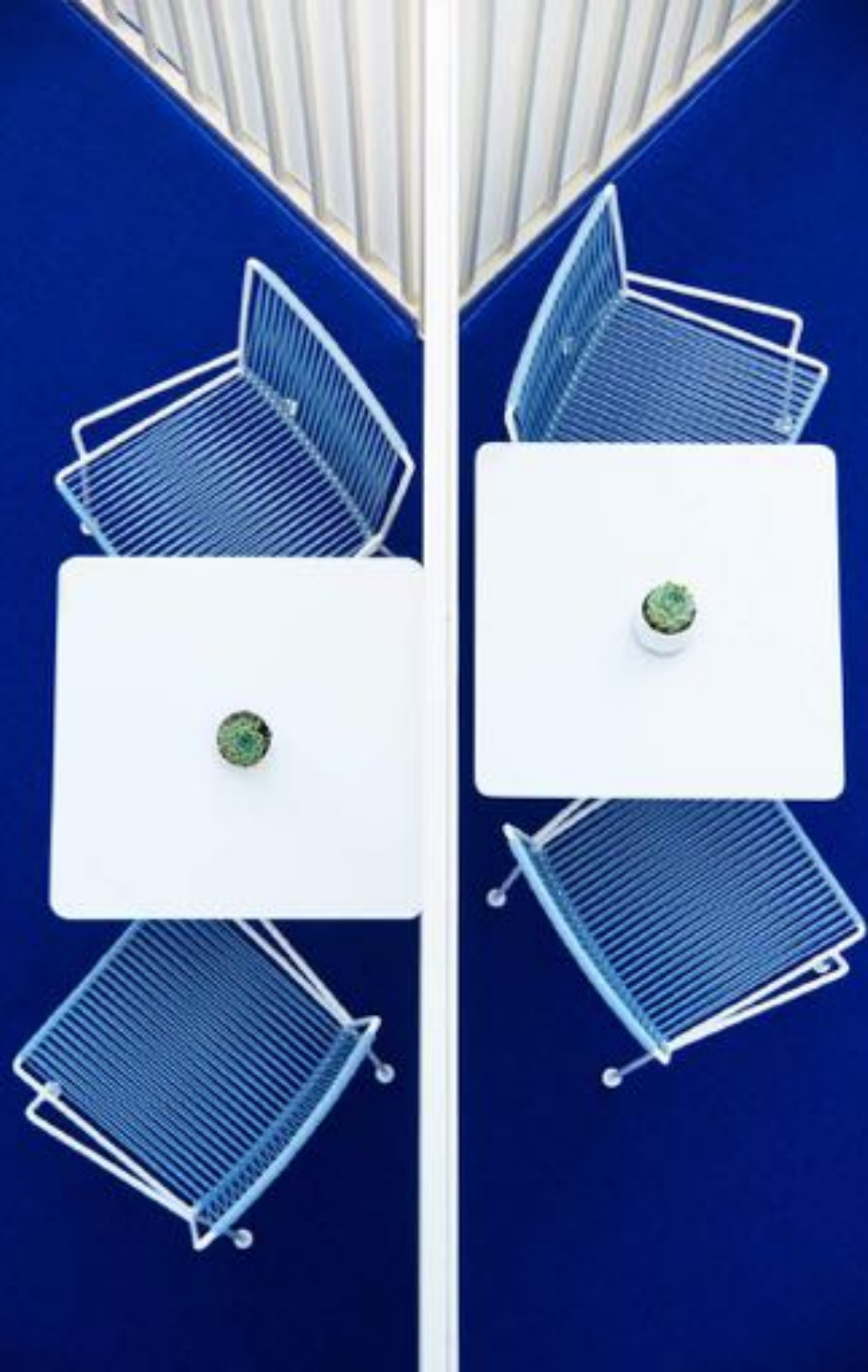
PH 323 650 9090 STANDARDHOTELS.COM

**“SETTING THE
STANDARD”**

W Magazine

**“CITADELS OF
CHIC”**

THE NEW YORK TIMES





**“THE HOTELS
OF THE
FUTURE”**

TRAVEL + LEISURE

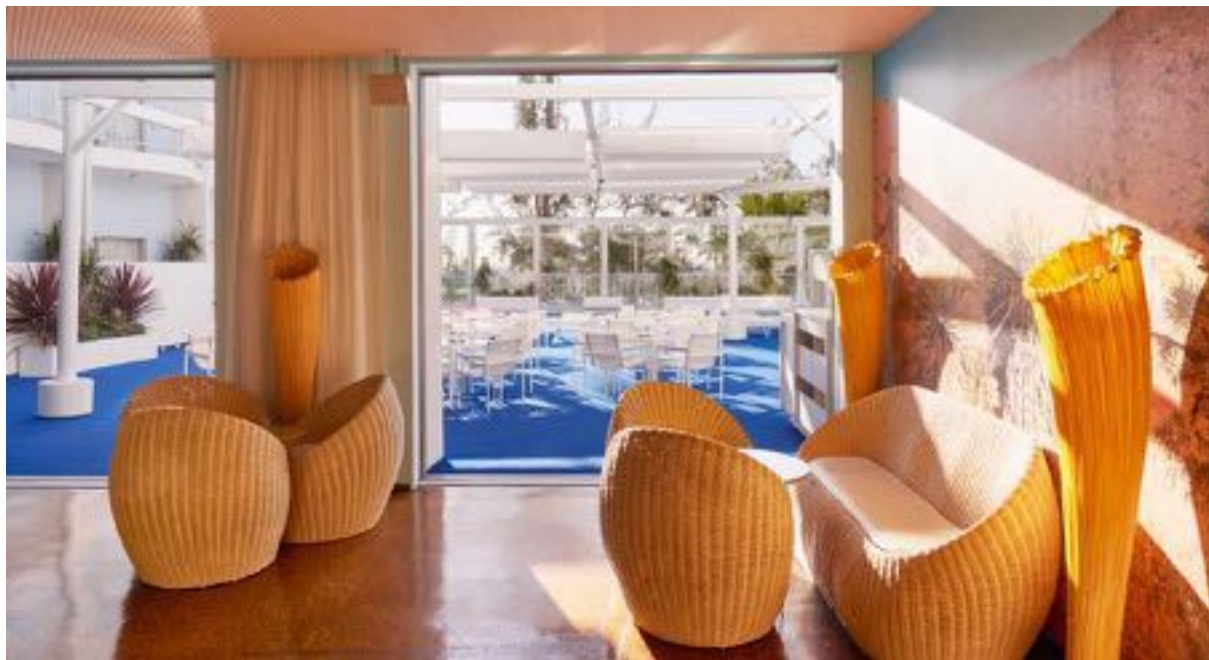
**“THE WORLD’S MOST
HIGH-PROFILE AND
SINGULARLY DESIGN-
CONCIOUS HOTELS”**

HOSPITALITY DESIGN

“AN UNLIKELY
HYBRID
OF MODERNIST
ARCHITECTURE
AND GRITTY
ROCK ‘N’ ROLL.”

THE NEW YORK TIMES



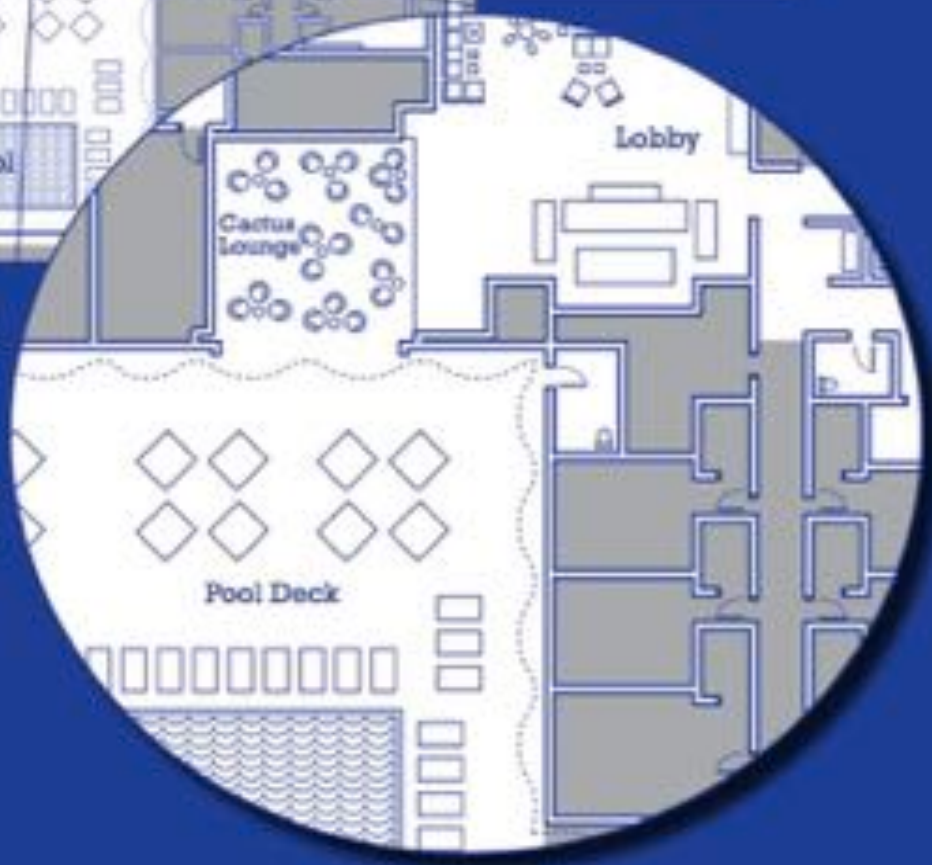
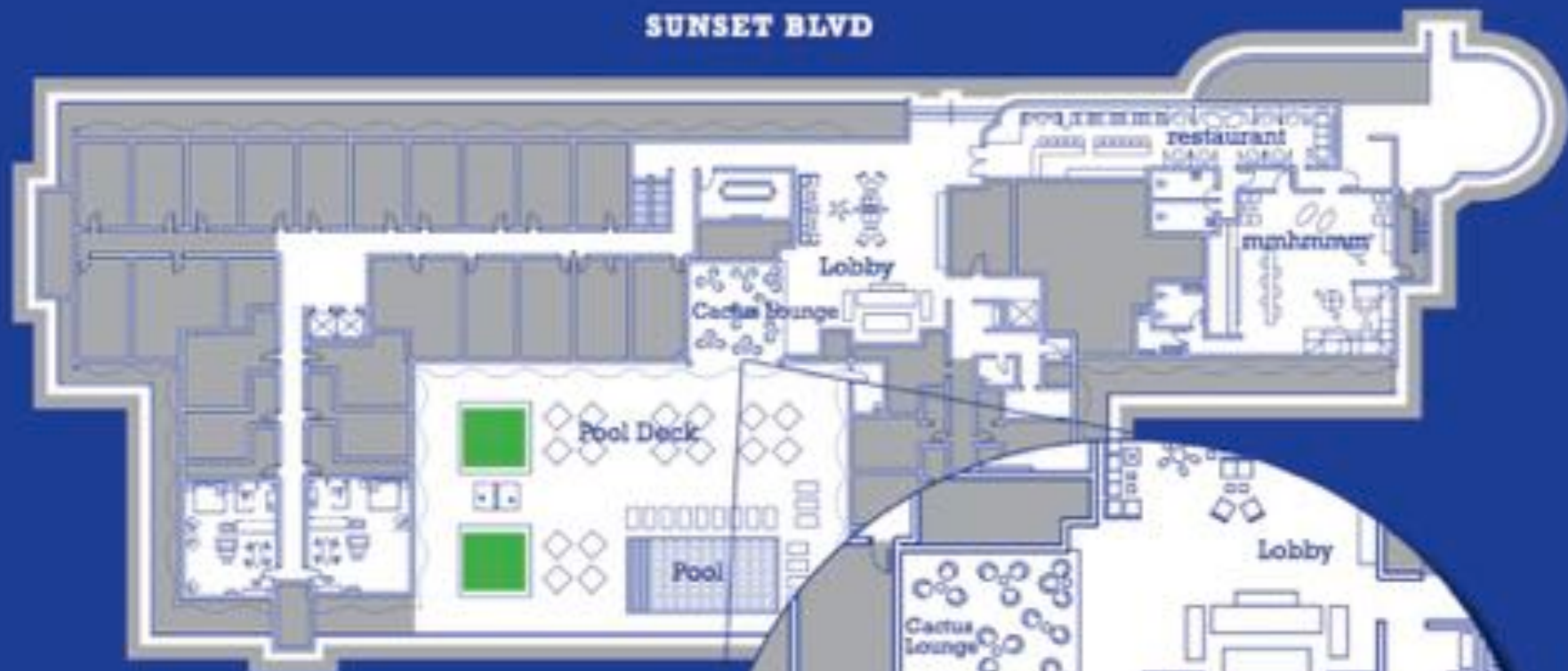


CACTUS LOUNGE

CAP. 50

The Cactus Lounge – named for its desert mural vista – is located off The Lobby and looks out onto the sunny pool deck. Accommodating up to 50 for cocktails, the lounge plays host to any number of events from luncheons to live performances. (Combine with the pool deck for large events.)

SUNSET BLVD



CACTUS LOUNGE

675 SQ FT • (27X25)



POOL DECK

CAP. 400

An iconic Hollywood poolside venue with blue astroturf, large heated pool, walk-up bar and cocktail service, ping-pong tables and fantastic views of Los Angeles. Capacity is 400; imagination is the limit. Sections can be reserved for smaller events

SUNSET BLVD



POOL DECK
5472 SQ FT • (96X57)



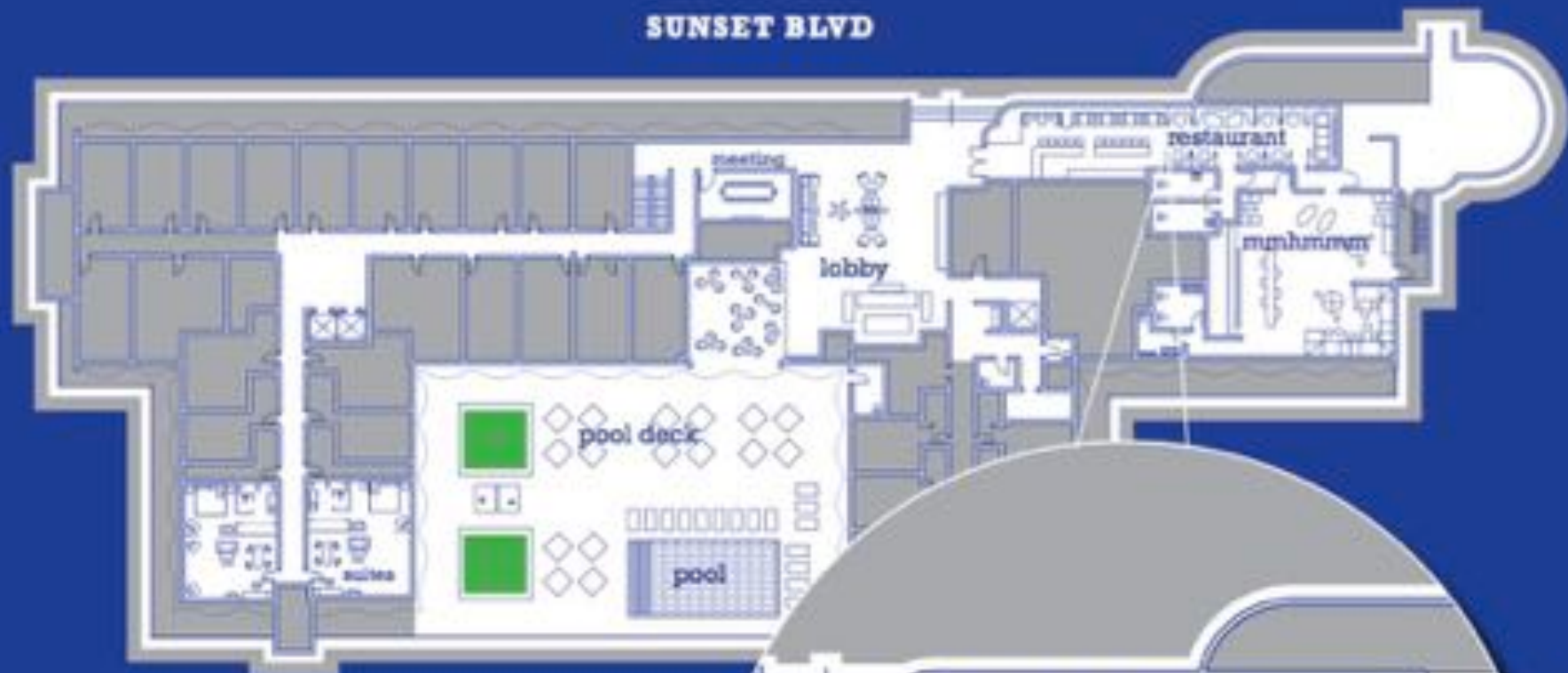


24/7 RESTAURANT

CAP. 100

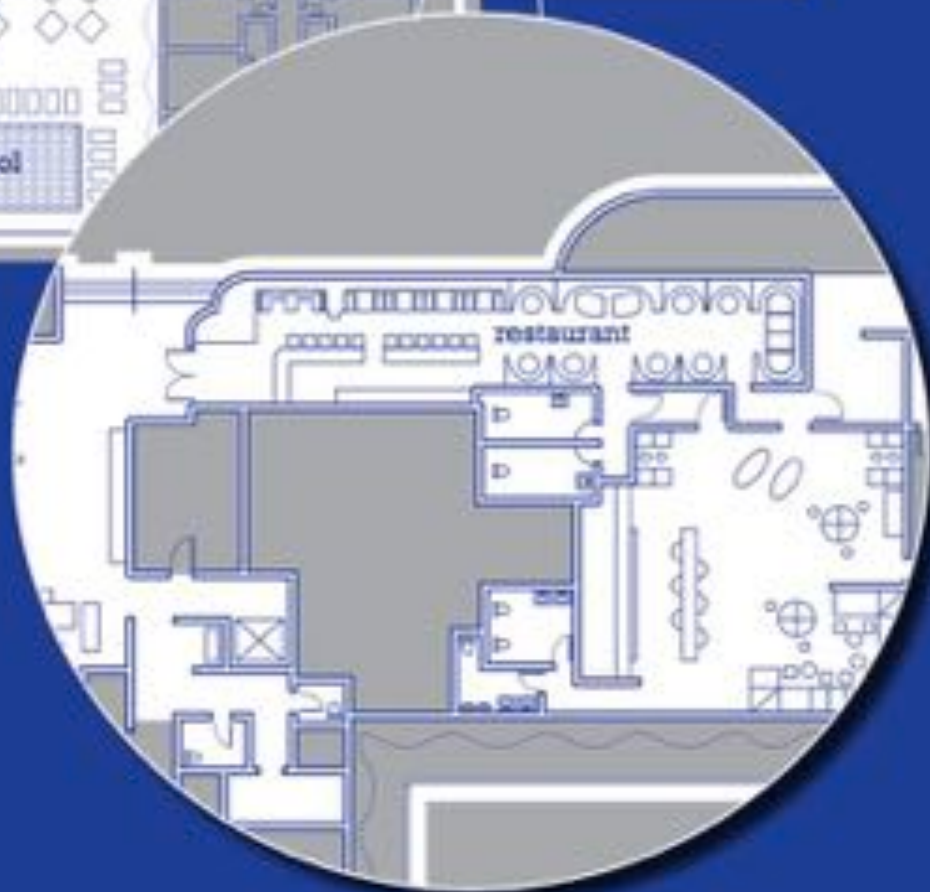
Our 24/7 restaurant seats up to 100 people and serves a delightful array of international comfort foods, guaranteed to satisfy any craving anytime. The vintage décor is the perfect backdrop for your power lunch, dinner meeting, photo shoot or filmed interview.

SUNSET BLVD



24/7 RESTAURANT

978 SQ FT • (18X50)



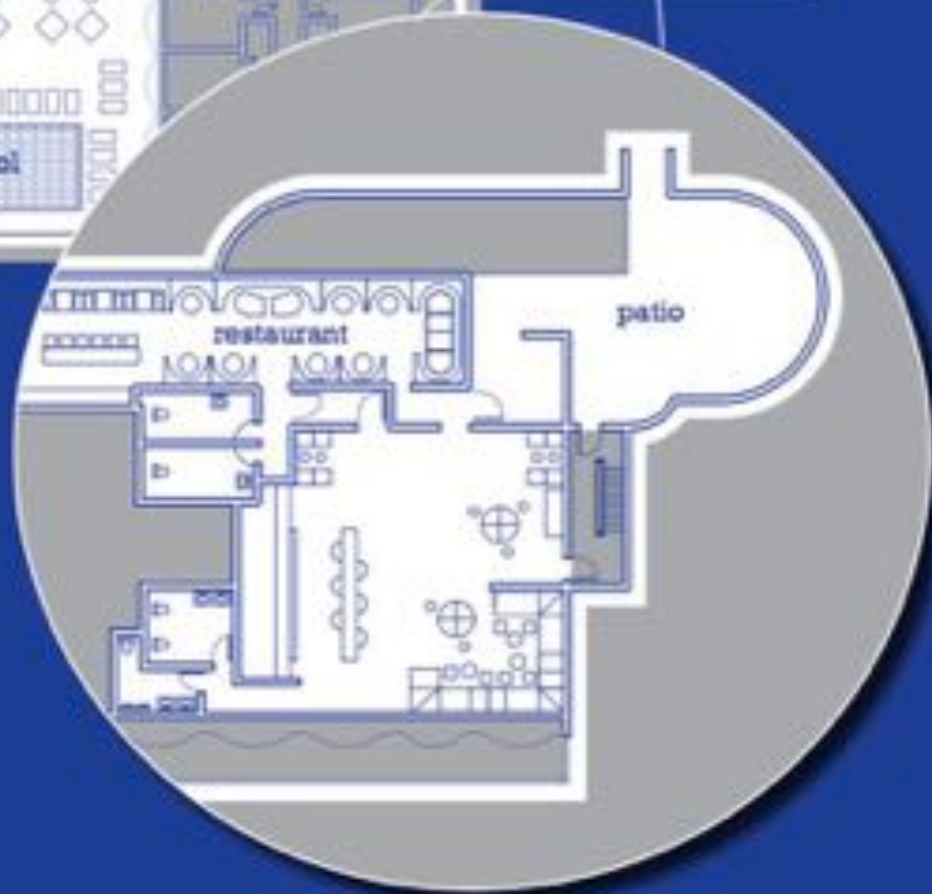
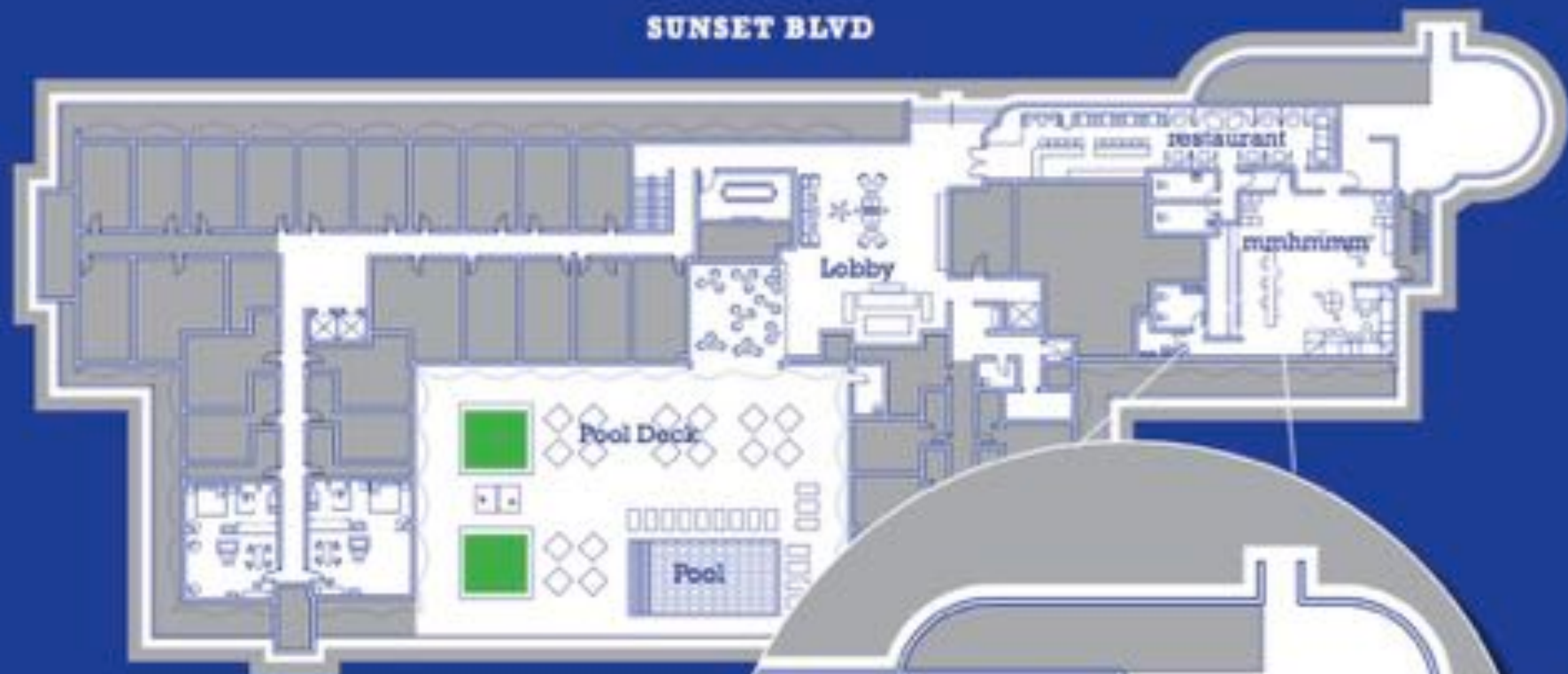


MMHMMM

CAP. 150

An attitude as much as it is a club, mmhmmm, is The Standard's boulevard facing disco. Whether late-night or afterwork, a party here is always destined to be something special.

SUNSET BLVD



MMHMMM

1400 SQ FT • (38X37)



MEETING ROOM

CAP. 14 / 250 SQ FT / 10' X 25'

When it's time to get down to business, our meeting room is at your service. The room offers catering, A/V, high speed WiFi, conference phones, and an executive conference table which seats up to 14.



SUITES

Our two-room suites feature a separate living and dining room divided by sliding shoji screens, a king size bed, a wraparound terrace with sweeping views and are great for press junkets, hospitality suites and wardrobe fittings.

CAP. 20 • 492 SQ FT
28' X 23'

The Standard

Hollywood

Speak soon!

Dawn Olson *Events Manager*

P 213.439.3006

DawnOlson@StandardHotels.com

