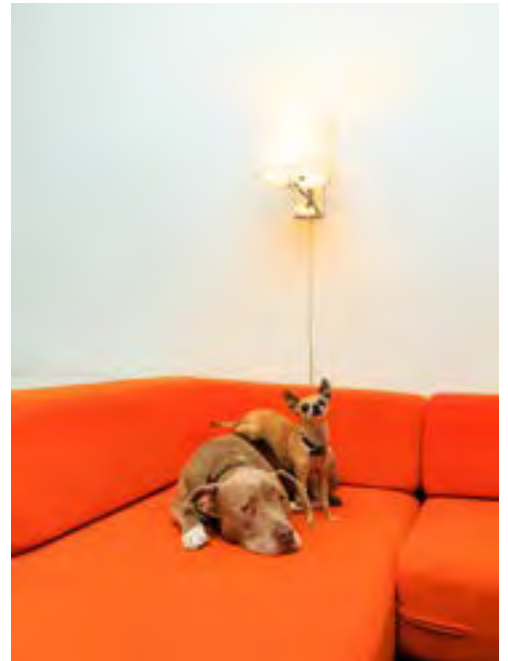
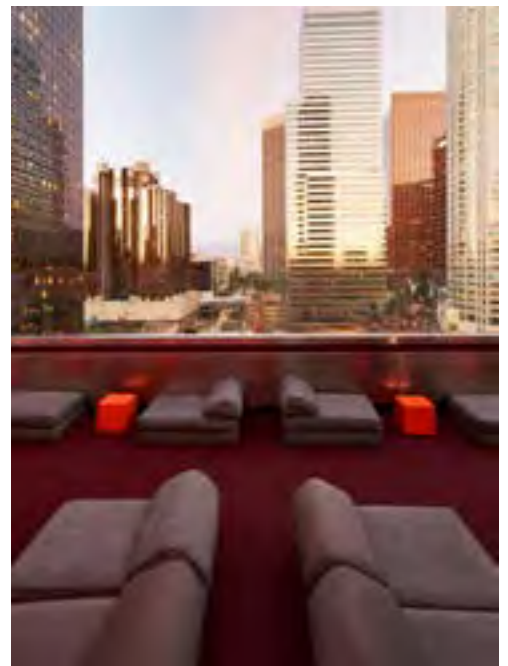


The Standard

Downtown LA

IMPECCABLE SERVICE SANS ATTITUDE

Condé Nast Traveler



CONFIDENT, WORLDY, AND A LITTLE MYSTERIOUS

Vanity Fair

OVERVIEW

Originally constructed as the headquarters of Superior Oil, The Standard, Downtown LA is Mid-Century California architecture par excellence. Smack-dab in the center of booming Downtown Los Angeles, the 207-room hotel features massive guest rooms, a rooftop pool and bar with stunning panoramic views of LA, an intimate rooftop beer garden, a stellar 24-hour restaurant, and the full-service Ping-Pong club, the Paddle Room. There is also a quarry's worth of marble on the façade and covering the lobby, which is, well, very impressive.



HOTEL FEATURES

All rooms feature oversized guest rooms, free wi-fi, 24-hour room service, overstocked minibars, super comfy beds, egyptian cotton sheets, fluffy down pillows, big sunny windows that open, giant mirrors, huge tvs, bluetooth audio speakers, custom bath amenities, cozy robes, x-large bath towels, mood lighting, extra-long work desks, pet-friendly, and a 24-hour gym.



LOBBY



OVERVIEW

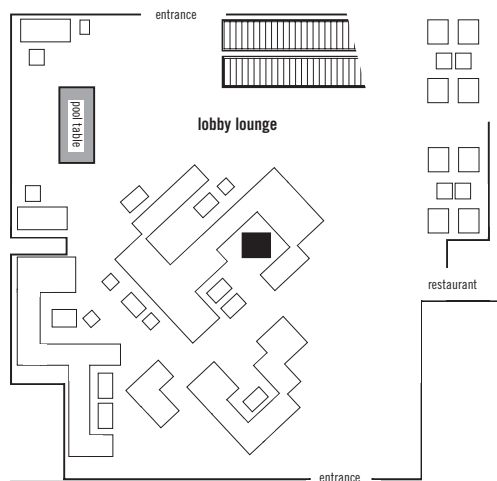
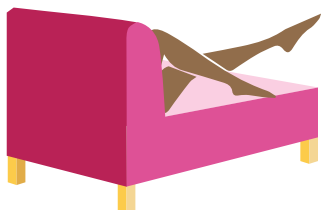
Built as the headquarters for Superior Oil in 1955, The Standard's landmarked building features an opulent marble lobby and iconic Mid-Century design. The vaulted lobby features a Vladimir Kagan labyrinth sofa, installation pieces by Jenny Holzer and Ryan McGinness, and amenities such as a DJ booth, modular projection screen, bar, billiards table, Ping-Pong tables, and a photo booth.

FEATURES

Cocktail Receptions
Private Bar
200 Person Capacity

DIMENSIONS

2650 square feet



PENTHOUSE



OVERVIEW

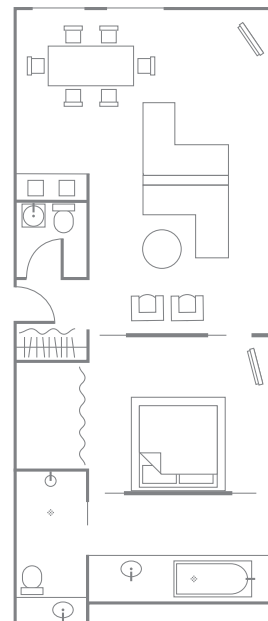
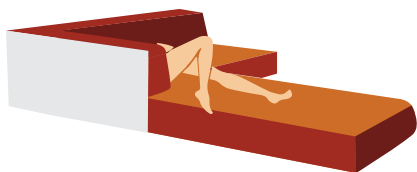
The Penthouse suites have tons of natural light from their corner location, feature a king size platform bed, a separate living room with a dining table for six and sitting area with labyrinth sofa. The spacious bathroom has a super sized shower and soaking bathtub, spacious vanity area, and separate water closet.

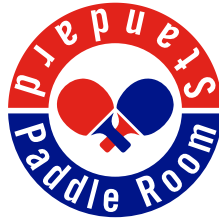
FEATURES

Small Meetings
Trunk Shows
Intimate Gatherings
20 Person Capacity

DIMENSIONS

915-1000 square feet





OVERVIEW

Players of every ability test their table tennis skills on nine pro-level tables at the Paddle Room. Located on the mezzanine, just up the escalator above the lobby, the Paddle Room's three full bars serve specialty cocktails as well as craft brews on tap. Plus, a small-bite menu with plenty of paddle-whacking delights.

FEATURES

- Nine Ping Pong Tables
- DJ Booth/House Sound
- Projection
- Private Space
- Cocktail Receptions
- 300 Person Capacity
- Three Bars

DIMENSIONS

- Arena - 2064 square feet
- B Room - 1348 square feet
- VIP Room - 1430 square feet
- Lounge - 2778 square feet





OVERVIEW

The Rooftop offers panoramic views of Los Angeles and the mountains beyond. There's a heated swimming pool, red AstroTurf deck, dance floor, large film projector, DJ booth, poolside bar, outdoor fireplace, waterbed pods, sculptured topiary and a garden bar.

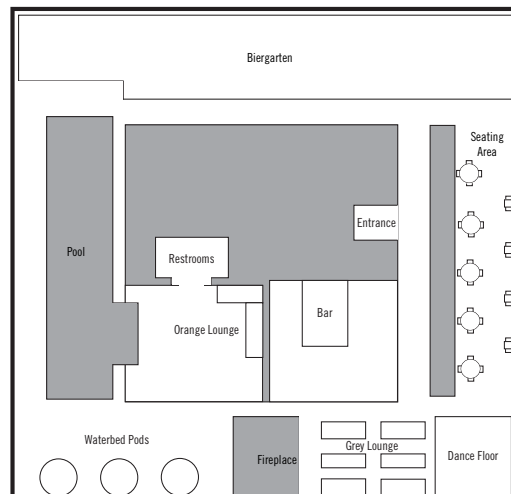
FEATURES

- 360 views of Los Angeles Skyline
- Heated swimming pool
- DJ Booth/House Sound
- Cocktail Receptions
- Buyouts
- Fireplace
- Waterbed Pods
- Lounge
- 350 Person Capacity



DIMENSIONS

6275 square feet



BIERGARTEN



OVERVIEW

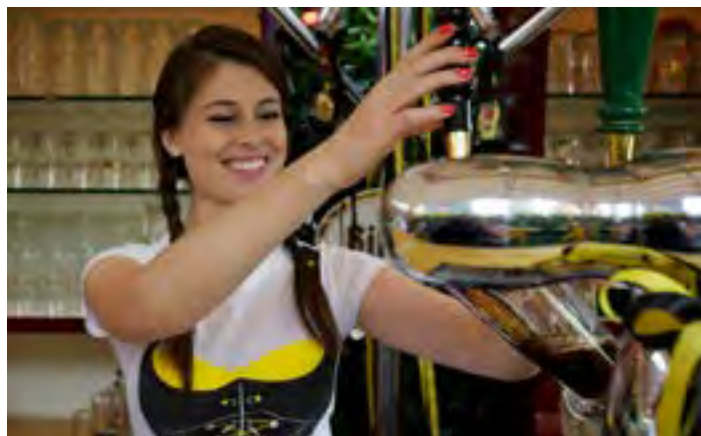
The Biergarten offers tasty German classics. Delve into pretzels, weiners, strudels, and beer amid the ambiance of our famous rooftop garden.

FEATURES

Bar
Ping Pong Table
Foosball Table
Sound
Receptions
80 Person Capacity

DIMENSIONS

1554 square feet



Biergarten

BLONDE + BRUNETTE MEETING ROOMS



OVERVIEW

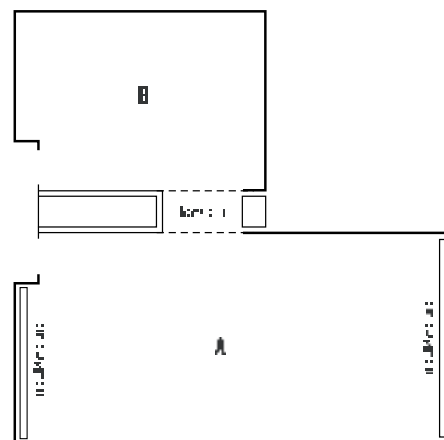
Our Blonde and Brunette Meeting Rooms on the 4th Floor are the ideal space for your presentation, training session, screening, or small meeting. The room has complimentary WiFi, and there's an attached room for coffee and pastry breaks.

FEATURES

- Small Meetings
- Breakout Room
- Free Wifi
- Tables and Chairs
- 45 Person Capacity

DIMENSIONS

Meeting Room A - 720 square feet
Meeting Room B - 300 square feet



x2

The Restaurant



OVERVIEW

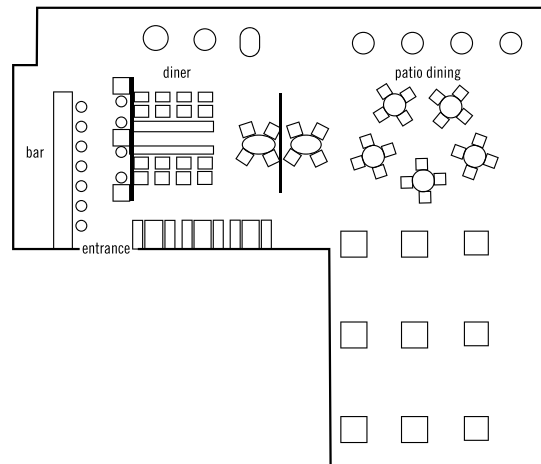
The 24/7 Restaurant at The Standard, Downtown LA specializes in organic, locally sourced comfort classics served all day, every day in a vibrant brasserie setting. There's a diner-style counter that's perfect for cocktails or a quick bite, as well as a supremely charming outdoor patio.

FEATURES

- Cafe Style Seating
- 24-Hour Service
- House Sound
- Patio
- 120 Person Capacity

DIMENSIONS

1626 square feet



FIRE PIT



OVERVIEW

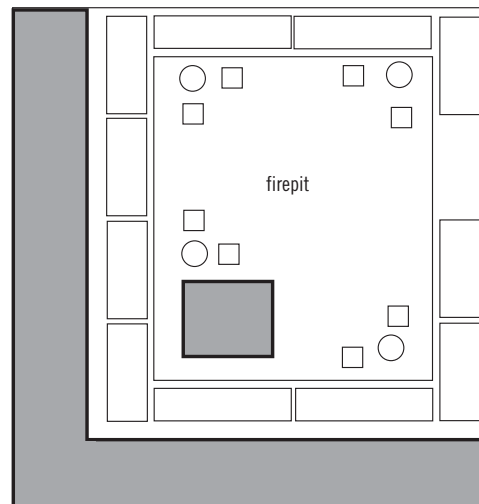
Located on the ground level, adjacent to the lobby and restaurant patio, The Firepit is the ideal space for a casual, yet intimate outdoor reception or group dining experience.

FEATURES

- Small cocktail receptions
- Koi Pond
- Fire Pit
- House Sound
- 40 Person Capacity

DIMENSIONS

469 square feet



**For sales inquiries, please contact:
213 439 3006
DowntownLAEvents@StandardHotels.com**